



1400



TENSIO



30 - 40 min

S1 **4*12**



x2

S2 **8*25**



x8

S3 **8*16**



x15

S4 **5*16**



x2

S5 **4*14**



x36

S6 **6mm**



x1

S7 **3mm**



x1

S8



x3

S9



x4

S10



x2

S11



x2

G



x1

H



x2

I



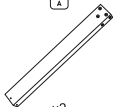
x2

J



x2

A



x2

B



x1

C



x1

D



x1

E



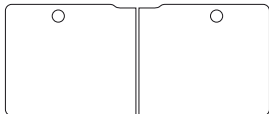
x1

F



x1

K



x1

M



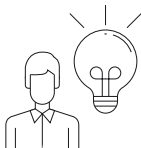
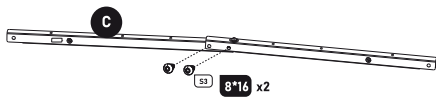
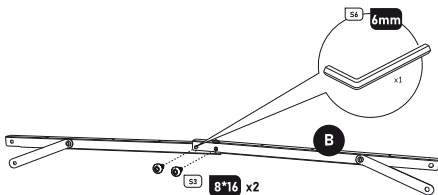
x1

N

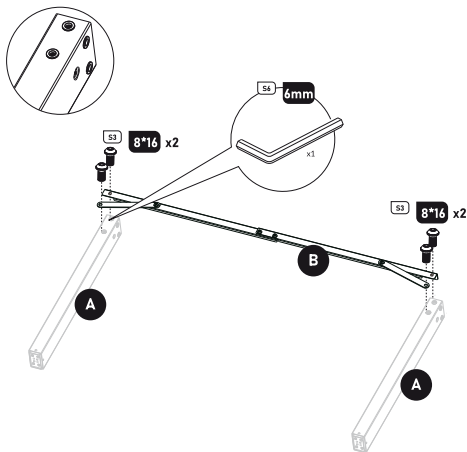


x1

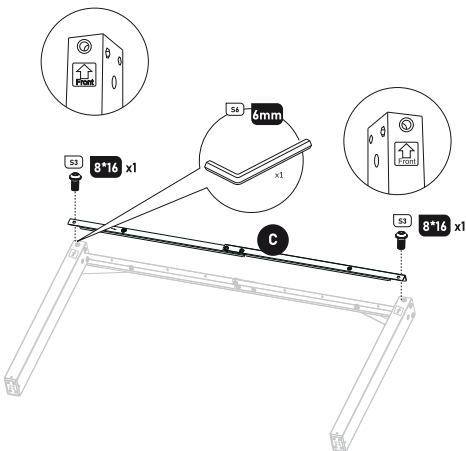
1



2

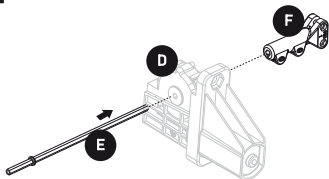


3

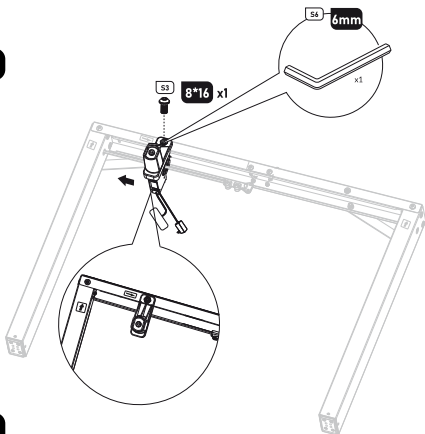


MAKE SURE THE FRONT LABELS ARE IN THE SAME DIRECTION.

4

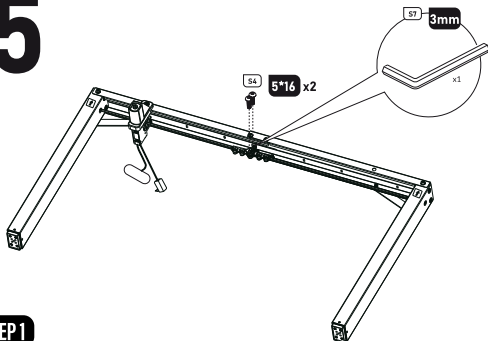


STEP 1

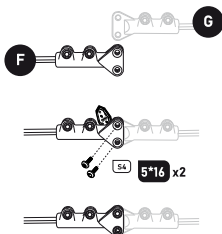


STEP 2

5

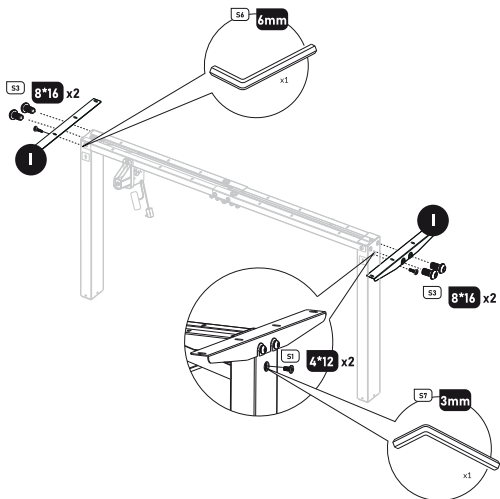


STEP 1

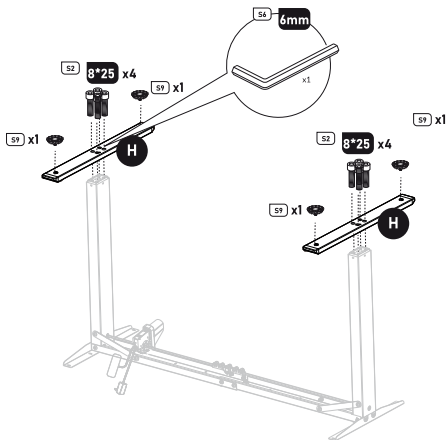


STEP 2

6

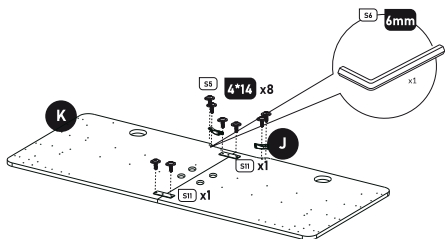


7

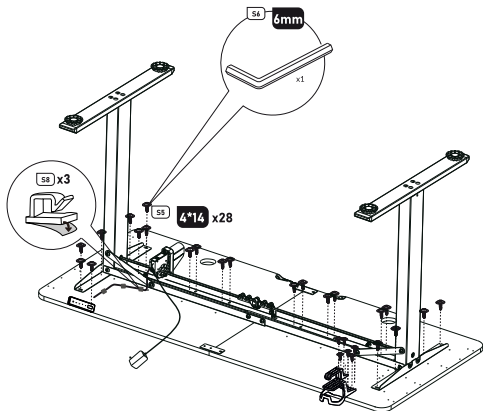


**PLEASE MAKE SURE THE TABLE LEGS ARE VERTICAL TO THE CONNECTING ROD.
AND THEN TIGHTEN ALL THE SCREWS.**

8

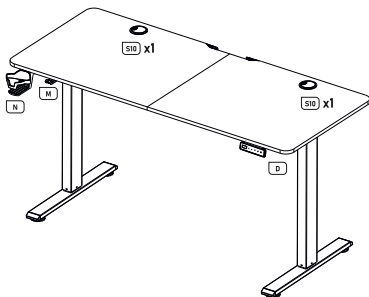


9




10

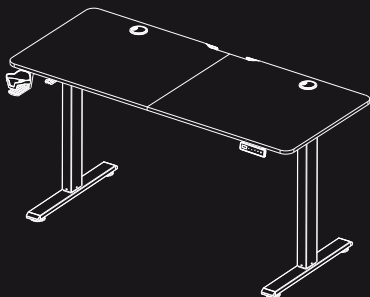
1400
TENSIO



RESET

AFTER THE TABLE IS INSTALLED
PLEASE PRESS THE  KEY TO START.

THE TABLE WILL BE AUTOMATICALLY DROP TO THE LOWEST POINT, STAY FOR 3 SECONDS, THEN RISE TO THE HIGHEST POINT, AND FINALLY RETURN TO THE INITIAL POSITION - SUCCESSFUL INSTALLATION.



DIABLO

CHAIRS



100%
Finnish &
Danish
workspaces



Assembly



Repair



Disassembly

DIABLO CHAIRS: A WORKSPACE SOLUTION